

## BLOCK OF THE MONTH - April Flower

Due date: Sunday April 11.

Email photo(s) of completed blocks to me by due date.

Fabric Choices:      Center of flower – Darker purple  
                                  Outer flower – Light purple or blue  
                                  Background – Light green

Center Flower Section:

A- 3 1/2" x 3 1/2"      Cut 1

B- 4" x 4"              Cut 2 (will yield 4 triangles)

Outer Flower:

C- 4" x 4"              Cut 2 (will yield 4 triangles)

D- 4" x 4"              Cut 2 (will yield 4 triangles)

Background:

E- 4" x 4"              Cut 2 (will yield 4 triangles)

Assemble:

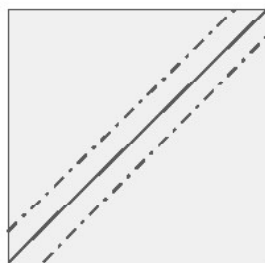
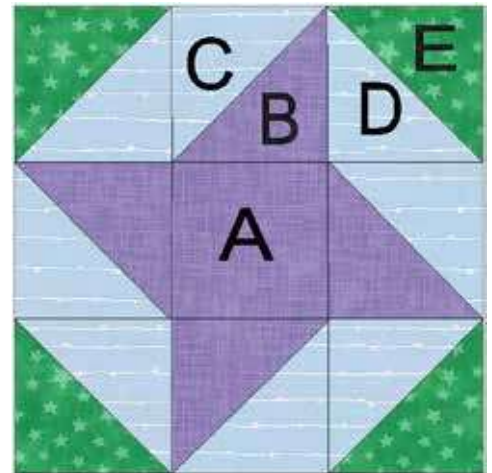
Make 1/2 triangle square: Place one B square and one C square right sides together. Draw diagonal line. Sew scant 1/4" seam on either side of diagonal line. See diagram. Cut along diagonal line. Open and press, then trim to 3 1/2" square. Repeat with remaining B squares and C squares.

Repeat process with D and E squares.

Sew remaining pieces together following block diagram.

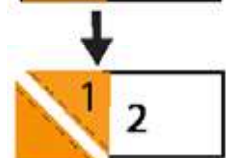
Finished size: 9 1/2" x 9 1/2" to make 9" quilt block.

Questions? Email [paulaconnell@hotmail.com](mailto:paulaconnell@hotmail.com)  
 or call/text 651-295-7834



Quilters abbreviations:  
 RST = Right Sides Together  
 HST = Half Square Triangle

Flip and Turn Method



Questions? Email [paulaconnell@hotmail.com](mailto:paulaconnell@hotmail.com) or call/text 651-295-7834